

# Visuline® 2400.5 Series with DisplayLight™ 4" Companion Post Mounted Display



## Specifications

Customer : \_\_\_\_\_

Customer Order No. : \_\_\_\_\_

Project Name : \_\_\_\_\_

**APCO Order No. :** \_\_\_\_\_

Sign Type/Location No.: \_\_\_\_\_

Prepared by : (Print clearly) \_\_\_\_\_ Date : \_\_\_\_\_

Revision (Date) : \_\_\_\_\_

### Display Cabinet

- Interior Use
- Exterior Use

Size: H. \_\_\_\_\_ W. \_\_\_\_\_ D. 5-7/16"

### Housing Finish

- Natural Satin Anodized
- 313 Dark Bronze Anodized
- 315 Black Anodized
- Other \_\_\_\_\_

### Cabinet Back Plate

- Aluminum (Anodized to match housing)
- FRP (Painted cabinet housings only)

### Door Hinge & Lock Device

#### Side Hinged

- Left  Right
- 3M "Dual Lock" Fastener (Included)
- Conventional Keyed Cam Lock (Requires custom 1" wide reveals)

#### Top Hinged

- Top (Opens approx. 60°, 75° or 90°, depending on door size & profile)
- 3M "Dual Lock" Fastener (Included)
- Keyed Plunger Lock

### Special Comments

---



---



---



---



---



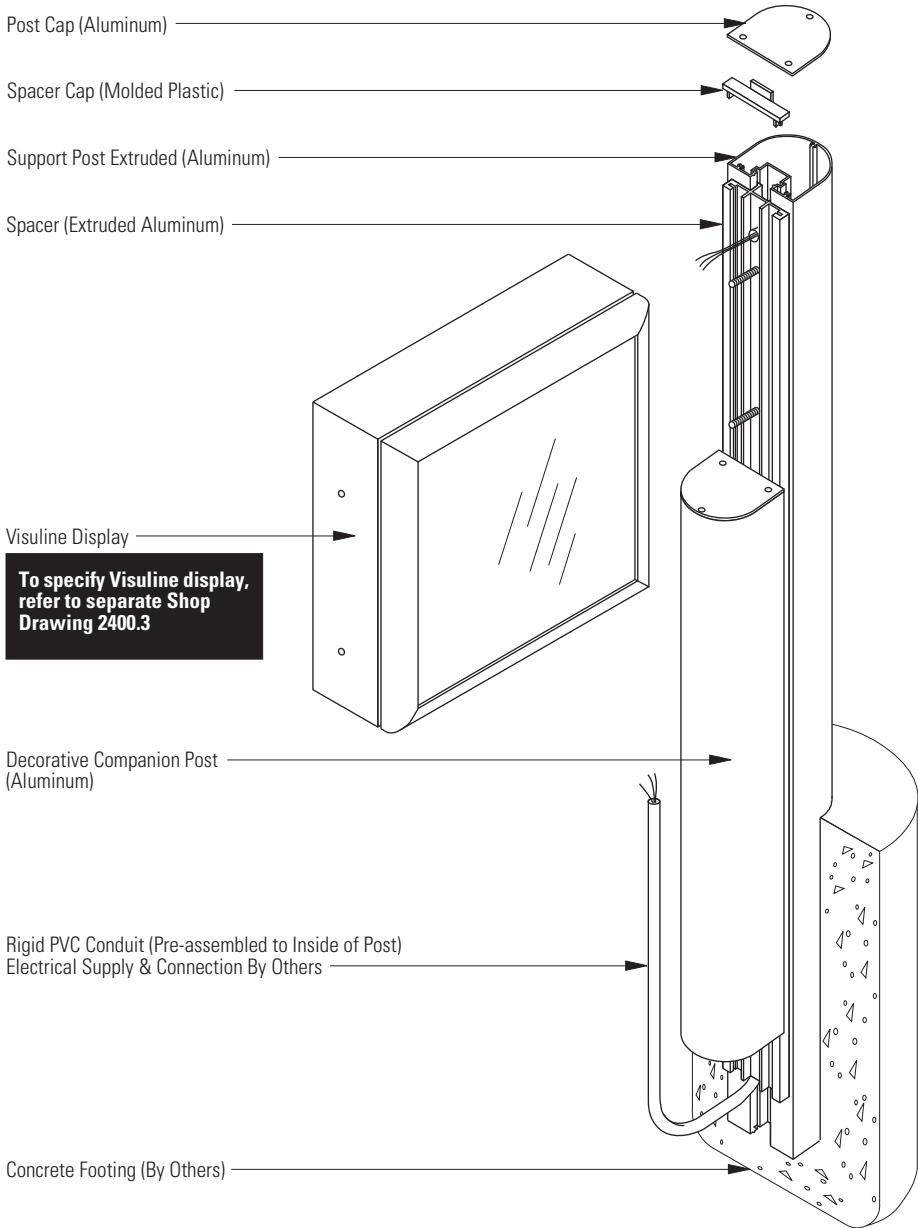
---



---



---



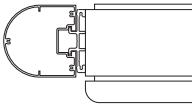
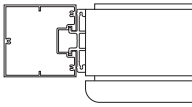
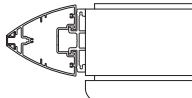
**Partial Exploded View**

# Visuline® 2400.5 Series with DisplayLight™ 4" Companion Post Mounted Display



## Specifications / Mounting Details

### Post Shape

- Radius 100mm 
- Square 100mm 
- Contour 100mm With EdgeSlot 

### Companion Post Shape

- To match Support Post (Std)
- Other \_\_\_\_\_

### Post Finish

#### Support Post

- Natural Satin Anodized
- 313 Dark Bronze Anodized
- 315 Black Anodized
- Painted (To match cabinet housing)
- Other \_\_\_\_\_

#### Companion Post

- To match Support Post (Std)
- Other \_\_\_\_\_

### Reveal Finish

- 315 Black Anodized (Standard)

### Electrical

#### Power Entry

- Right Post (Std)
- Left Post

### Mounting Method

- In-Ground (Standard)
- Above Grade with Welded Aluminum Plates (Anodized Finish Not Recommended)

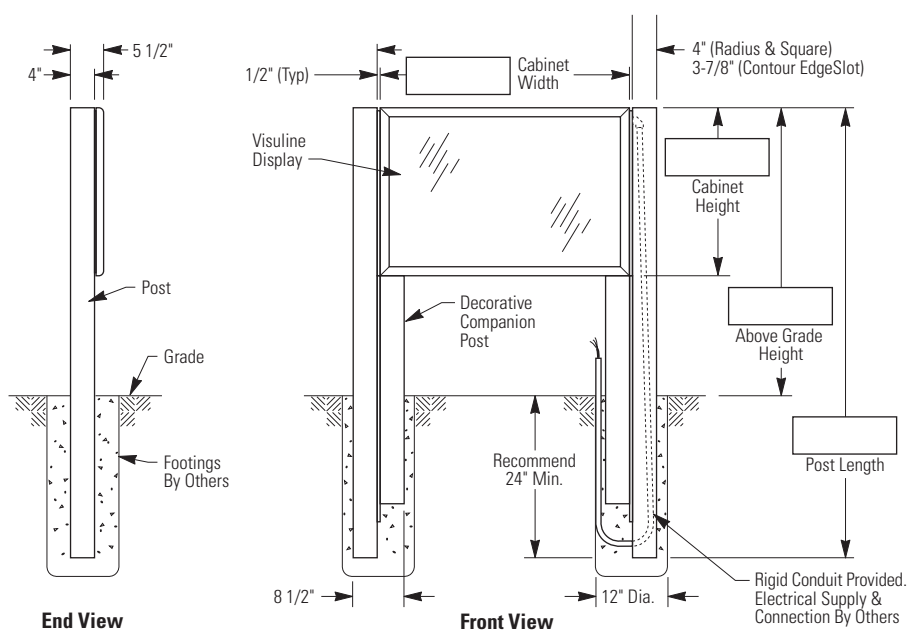
Above Grade Anchor Bolt Qty.: 4 Per Post / Total: 8

- Anchors Provided By Others
- Anchors by APCO

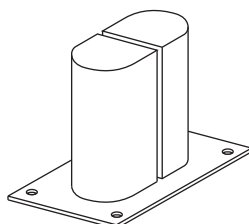
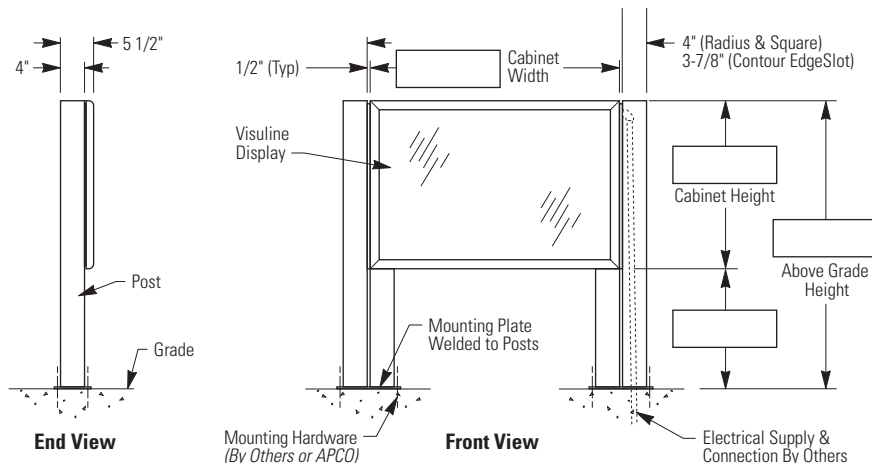
### Special Comments

**NOTES:** Sign must be assembled prior to installation.  
 Footing design to be specified by qualified person(s) based on local codes and geographical practices such as frost lines, soil conditions, etc.  
 Anchor bolts to be specified by qualified person(s) and installed per manufacturer's recommendations.

### In-Ground Installation (Standard)



### Above Grade Installation (Optional)



**Welded Mounting Plate**  
 (Radius Companion Post Shown)  
 Mounting pattern available upon request.